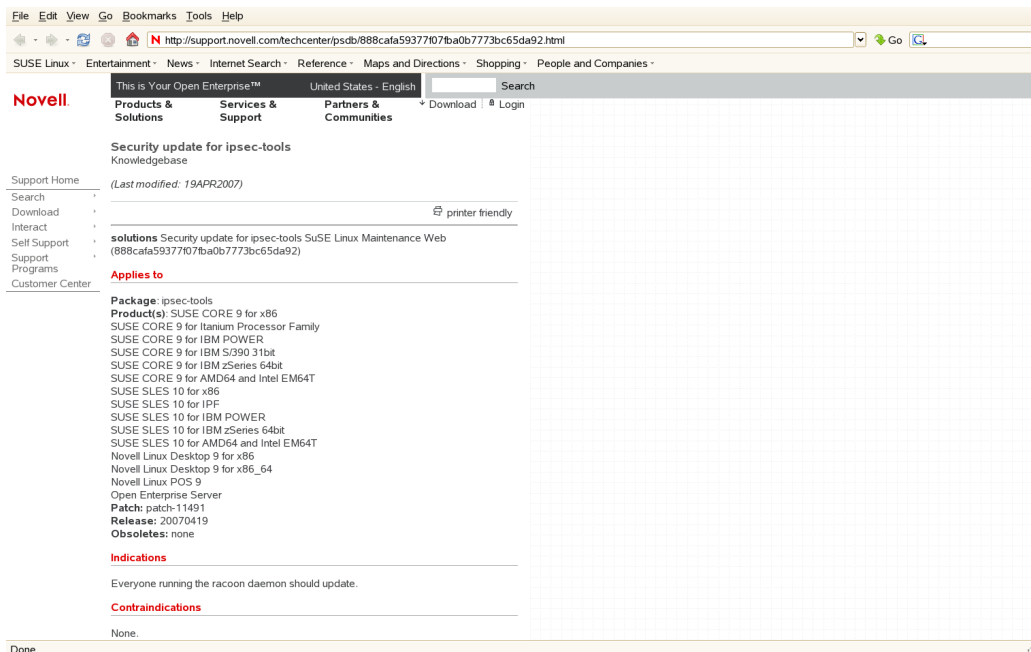
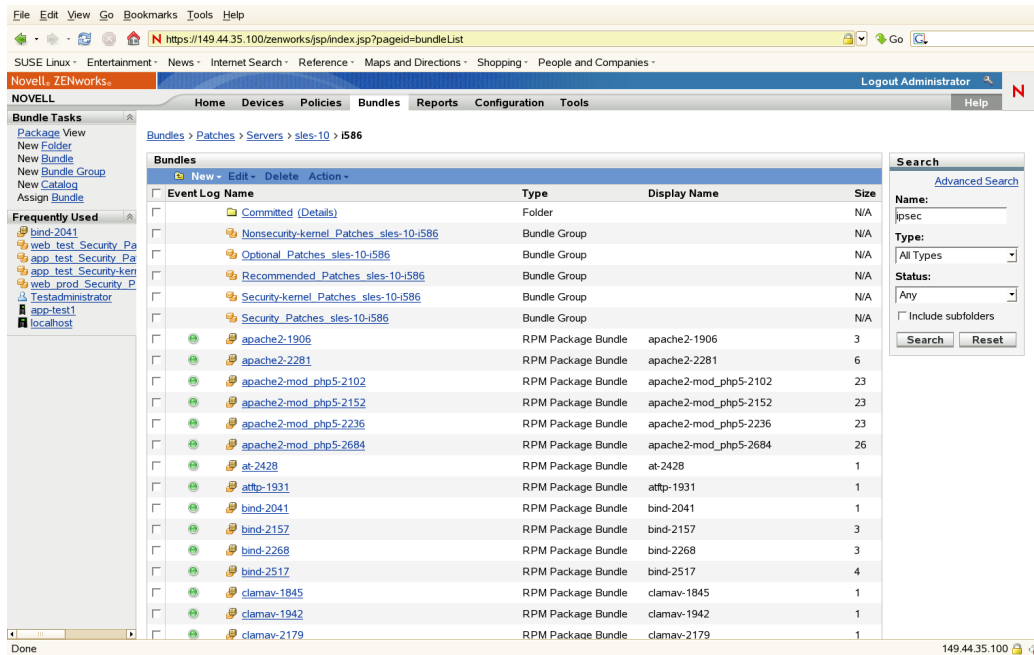


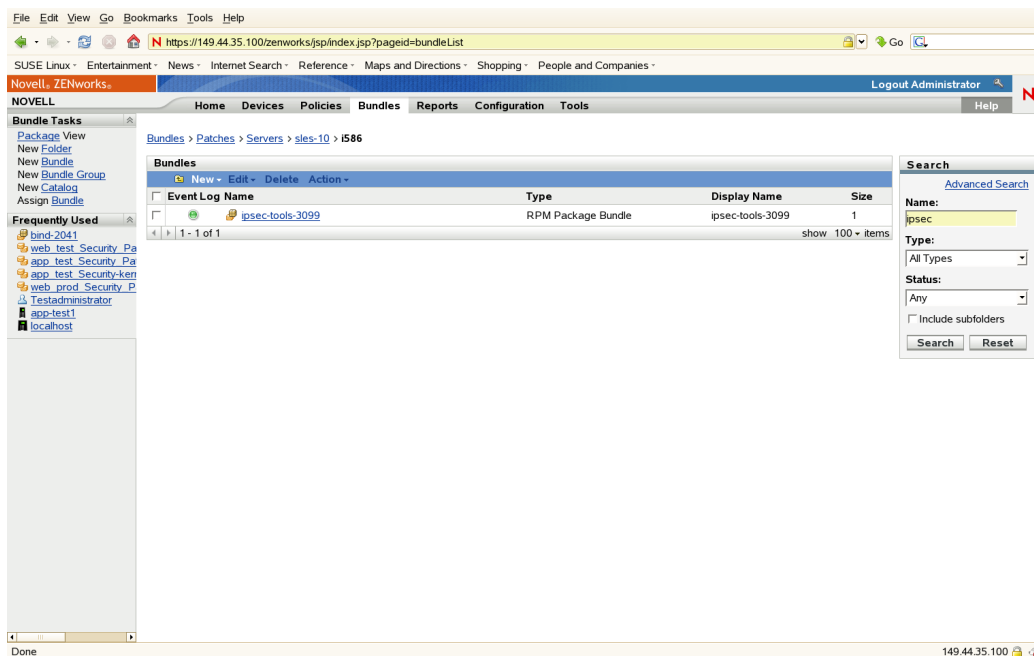
Hm – a new security patch “ipsec-tools” is out for SLES 10, says my mail box. Let's click the link.



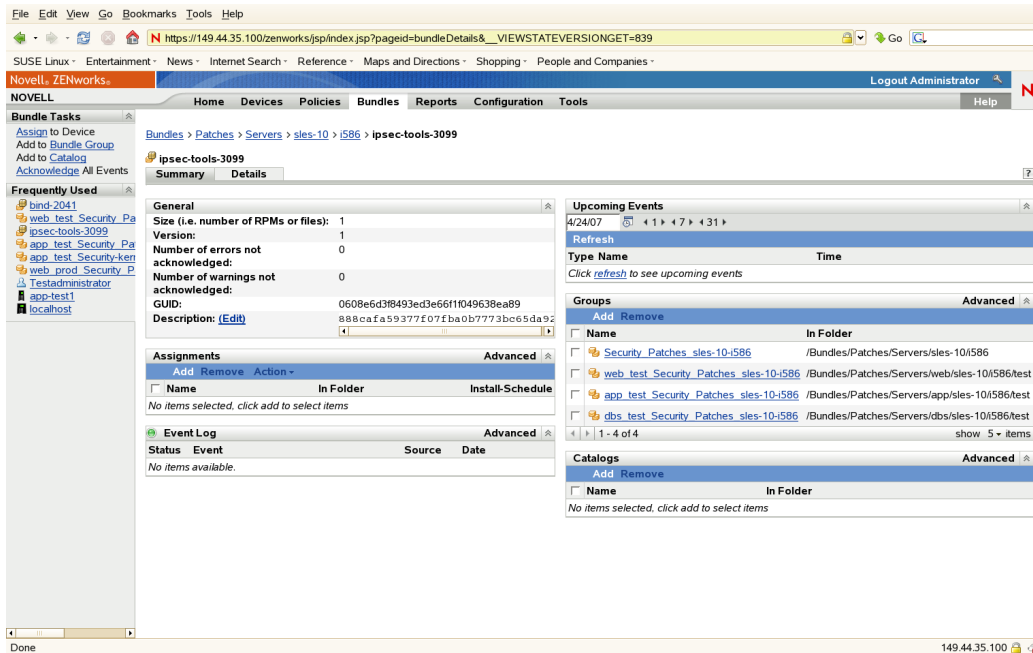
Ok – that's interesting. Let's see if our hourly yup/yup2zlm run has already pulled it in.



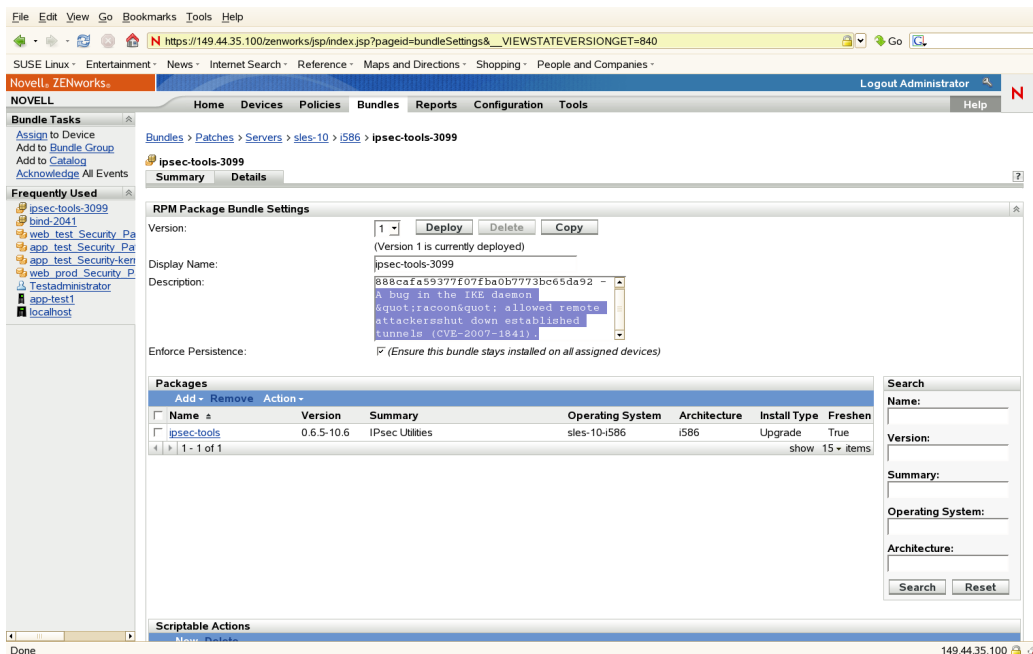
Go to Patches -> Servers -> sles-10 -> i586. Hm, lots of patches here, but why not use the search engine in the upper right corner ?



There is a ipsec-tools patch, but is it the right one ? Let's click on it.



It's the right one, we can tell from the patch id in the top line of the patch description. Compare it to the patch id mentioned on the patch's website. You can also see that it's still part of the test groups – so the testers still have to test it and then move it into production.



In the Details pane I can see more info and the rpms that this patch will put on my managed devices.